



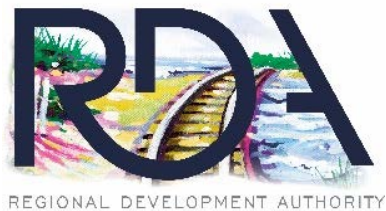
Connectivity for Accelerated Growth



Double Track Northwest Indiana Project

During the webinar, email
questions to:

doubletracknwi@nictd.com.



During the webinar, email questions to:
doubletracknwi@nictd.com.



PROJECT TEAM MEMBERS ASSISTING TODAY

Michael Noland, President, NICTD

Nicole Barker, Double Track NWI Project Manager, NICTD

Brianna Anderson, Project Engineer, NICTD

Greg Lorenzi, Deputy Project Manager, Lakeshore Engineering

Don Yetter, Design Project Manager, AECOM

Russell Coate, Design Project Engineer, Rail Lead, AECOM

Brian Czosnyka, Design Project Engineer, Civil Lead, AECOM

Karie Koehneke, Design Project Manager, Patrick Engineering

Eric Wolverton, INDOT Liaison to NICTD, American Structurepoint

During the webinar, email
questions to:
doubletracknwi@nictd.com.

AGENDA

1. Latest Project Information/Website as Tool
2. Project Summary
3. Schedule / Cost
4. Real Estate and Demolition
5. Station and Parking Improvements
6. Maintenance of Traffic
7. Fire Life Safety and Security
8. Transit Development Districts
9. Questions and Answers

We will start with ones submitted in advance, continue as time allows to those submitted during webinar

If you do not receive an answer today, the NICTD team will follow up with you after the meeting at the email address you provided.

QUESTIONS?

During the webinar, email questions to:

doubletracknwi@nictd.com

PROJECT WEBSITE:

www.doubletrack-nwi.com

GENERAL PROJECT HOTLINE:

219-850-4457



PROJECT WEBSITE

www.doubletrack-nwi.com

Select Language | ▼



[ABOUT](#) [PROPERTY IMPACT](#) [NEXT STEPS](#) [DOCS](#) [NEWS](#) [CONTACT](#)

✉ Sign Up for Latest News and Project Updates



CONNECTIVITY
FOR ACCELERATED GROWTH

VIRTUAL OPEN
HOUSE

During the webinar, email questions to:
doubletracknwi@nctd.com.

PROJECT WEBSITE

www.doubletrack-nwi.com



ABOUT PROPERTY IMPACT NEXT STEPS DOCS NEWS CONTACT

BRINGING INDIANA TO CHICAGO

The existing South Shore Line (SSL) provides a vital transportation link that connects Northwest Indiana to Chicago. The SSL proposes to expand the SSL from single track to double track between Gary and Michigan City and construct, signal, power, and platform improvements at five passenger stations.

In May 2014, the South Shore Line (as the Northern Indiana Commuter Transportation District) adopted a [20-year Strategic Business Plan](#). This Plan details proposed improvements to the South Shore Line traveling approximately 25 miles through Lake, Porter and La Porte Counties, and the communities of Gary, Portage, Ogden Dunes, Dune Acres, Beverly Shores, Pines and Michigan City, Indiana. The project's main component is to add a second track to the single track route, and move the street-running tracks along 10th and 11th Streets in Michigan City. This will allow the SSL to add trains for more frequent service, reduce delays and improve travel times.



PROJECT VIDEO

Video created and produced by [Group 7even](#) and TFF Productions

Sign Up for Latest News and Project Updates

Email

SIGN UP



Double Track NWI Project Overview

BACKGROUND



The Northern Indiana Commuter Transportation District (NICTD) is applying for New Starts federal funds administered by the Federal Transit Administration (FTA) to construct 16.9 miles of second track next to the existing South Shore Line track from Gary to Michigan City, Indiana.

The South Shore Line is an important component of NWI's transportation system and double tracking will provide a more competitive transportation option between NWI and Chicago. The proposed improvements will better connect the region by providing faster, more frequent, and more reliable train service.

PROJECT ELEMENTS



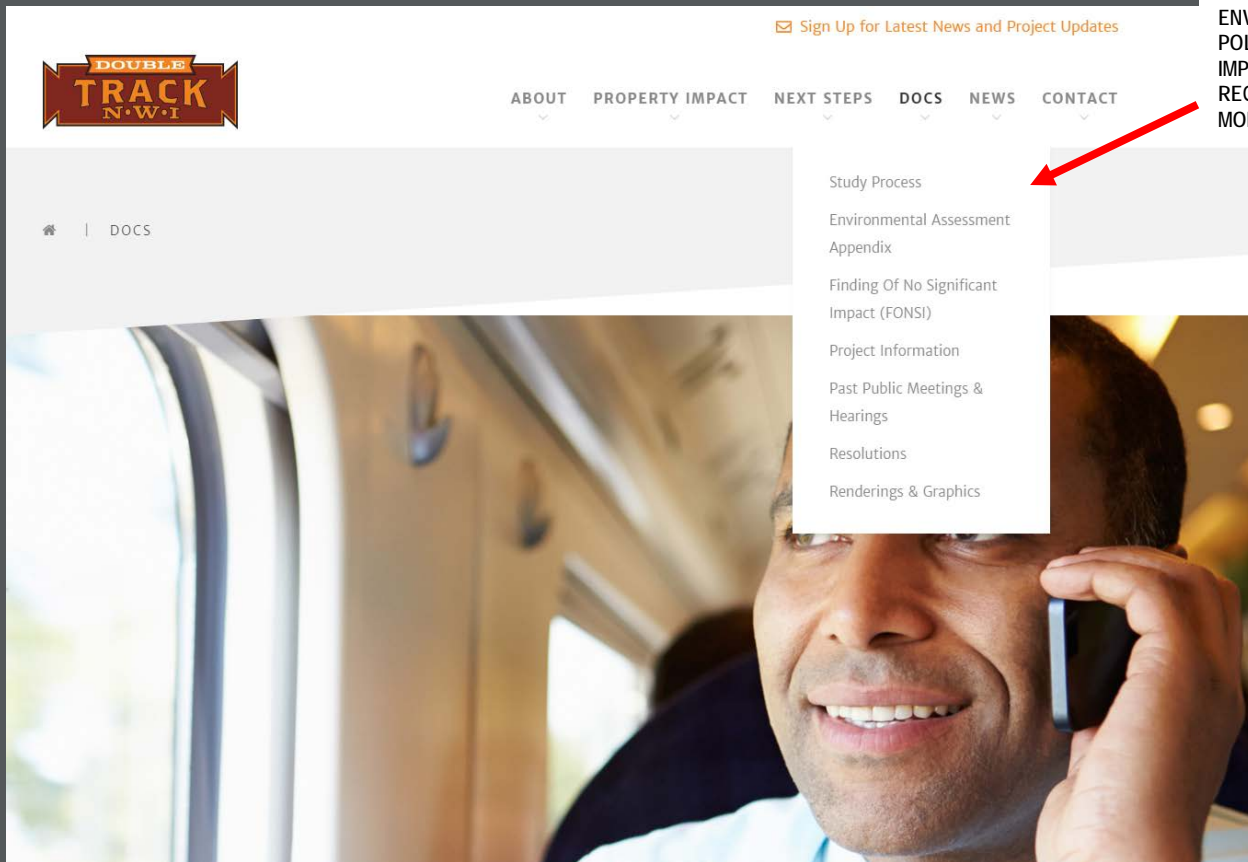
- 16.9 miles of second track
- 4 new bridges
- 9 new platforms at Gary/Miller, Portage/Ogden Dunes, Dune Park, Beverly Shores, and 11th Street (Michigan City) stations
- 1,359 additional parking spaces at 4 stations
- Replace single street-running track in Michigan City with 2 new, separate ballasted tracks
- Closure of 21 at-grade roadway rail crossings in Michigan City with conversion of 11th Street to one-way eastbound traffic between Chicago Ave and E Michigan Blvd



Peak Period Express Trains will offer a 33 minute reduction in travel time between

PROJECT WEBSITE

www.doubletrack-nwi.com/docs



EXTENSIVE INFORMATION ABOUT COMPLIANCE WITH FEDERAL NATIONAL ENVIRONMENTAL POLICY ACT, STUDIES, IMPACTS, MITIGATION REQUIREMENTS, AND MORE

www.doubletrack-nwi.com/property-impact/real-estate



ABOUT

PROPERTY IMPACT

NEXT STEPS

DOCS

NEWS

CONTACT

The property acquisition process began in Spring 2020 and will continue through all of 2020, and into early 2021.

Real Estate

[FTA Brochure: General Acquisition & Relocation Information](#)

[10th and 11th Street Road/Rail Crossing Changes](#)

[Michigan City Parcel Acquisitions – June 2017](#)

[Miller Parcel Acquisitions – June 2017](#)

[Ogden Dunes Parcel Acquisitions – June 2017](#)

For any Real Estate questions, please call (800) 382-5206.

**Please note that some files are very large and may take some time to load. We recommend right clicking and saving these larger files for easier viewing.*

Real Estate Acquisition

As part of its extensive planning for the Double Track NWI Project, the Northern Indiana Commuter Transportation District (NICTD) has determined that it may be necessary to acquire certain properties to implement the project.

NICTD will follow the guidelines of the Uniform Relocation Assistance and Real Property Acquisition Policies Act of 1970, as amended, along with state regulations. What this means is that NICTD will seek fair and cooperative agreements for property acquisitions.

www.doubletrack-nwi.com/property-impact/real-estate



During the webinar, email questions to: doubletracknwi@nictd.com.



PROJECT WEBSITE

www.doubletrack-nwi.com/contact/comment-form

DOUBLE TRACK N·W·I

ABOUT PROPERTY IMPACT NEXT STEPS DOCS NEWS CONTACT

Your Comments or Questions

Telephone

Email

First Name

Last Name

Address

Address 2

Zip Code

SUBMIT FORM

Check all that apply:

- Homeowner
- Business Owner
- Renter
- Interested Stakeholder
- Resident in NWI/ South Bend, IN
- Request to be contacted regarding upcoming meetings or other notifications on the project

COMMENT OR ASK QUESTIONS ANYTIME!

During the webinar, email questions to:
doubletracknwi@nicted.com.

PROJECT WEBSITE

- In Late 2020, a new **Construction Information** section will be added to the website. Will include:
 - Look-ahead Schedule of Work by geographic area
 - What residents and businesses need to know about temporary road closures/detours and pedestrian route changes, including ADA
- A formal Construction Outreach Plan will be developed with municipalities
- eNews email list, press releases, social media
- We welcome other suggestions





PROJECT OVERVIEW

During the webinar, email
questions to:
doubletracknwi@nicted.com.

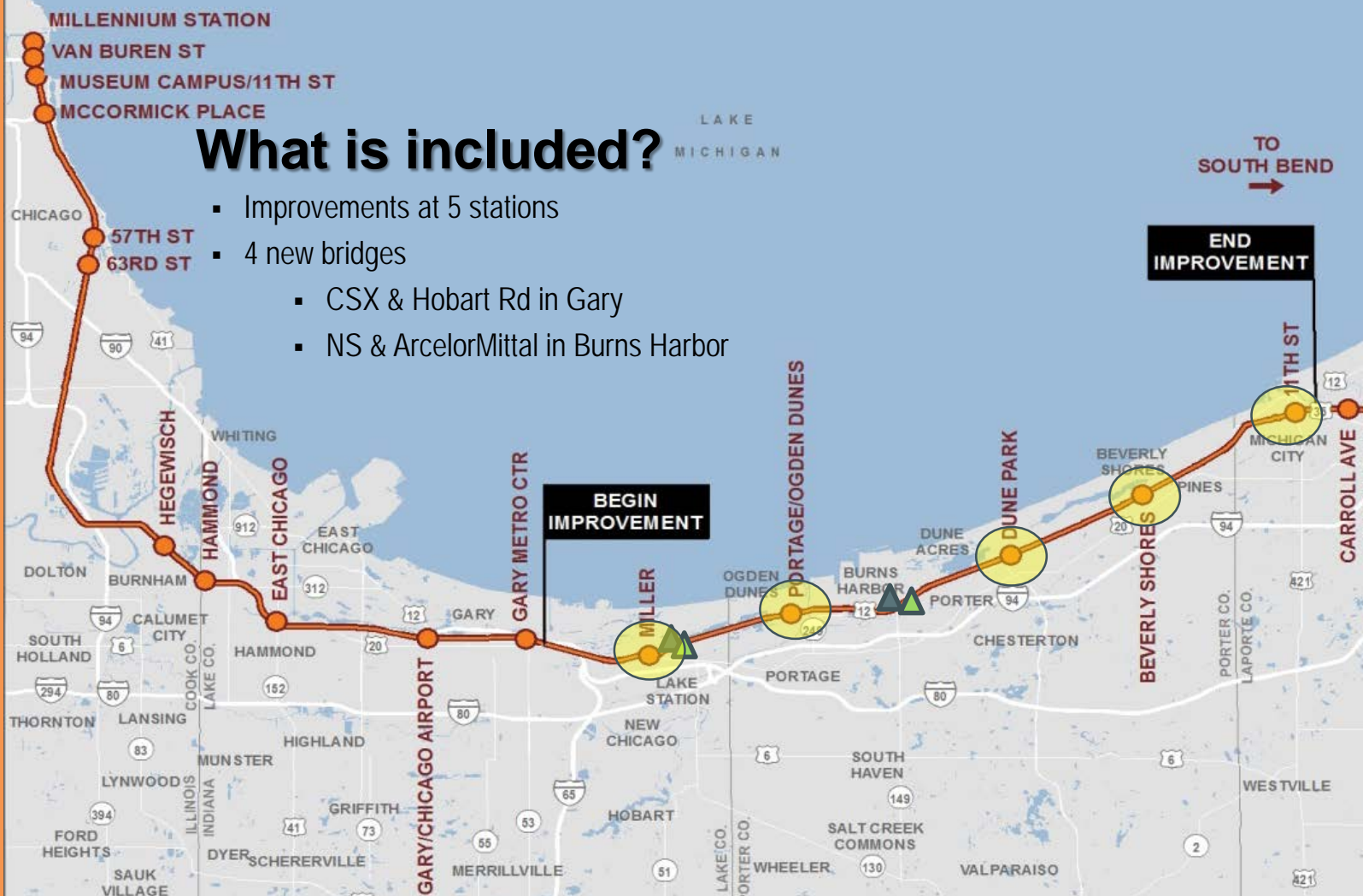
What is it?

- Major capital investment to double track 16 miles of our railroad between Gary and Michigan City



What is included?

- Improvements at 5 stations
- 4 new bridges
 - CSX & Hobart Rd in Gary
 - NS & ArcelorMittal in Burns Harbor



What is included?

- 4 new bridges
- High-level platforms at 11th St in Michigan City (2), Ogden Dunes/Portage (1), and Miller (2)
- Replaces embedded street running track in Michigan City with new separated rail along 11th St and relocates the railroad south of 10th St
- Relocates US Hwy 12 / US 20 connection to just east of Lake Street in Miller; shifts our tracks to the former US Hwy 12 alignment between Lake St and Fayette St



DECREASED
Travel Time

A large dark red arrow pointing downwards is positioned to the left of a white stopwatch icon.

INCREASED
Service

A large dark red arrow pointing upwards is positioned to the left of six white train icons arranged in two rows of three.

IMPROVED
Reliability

A large dark red arrow pointing upwards is positioned to the left of a white target icon with an arrow in the center.

INCREASED
Safety

A large dark red arrow pointing upwards is positioned to the left of a white thumbs-up icon.

MORE COMPETITIVE
Travel Options

A large dark red arrow pointing upwards is positioned to the left of three white icons representing a train, a car, and a bus.

INCREASED
Economic Benefits

A large dark red arrow pointing upwards is positioned to the left of a white icon of a dollar bill.

DECREASED TRAVEL TIME

Times shown are to Millennium Station



BEFORE

Michigan City: 1 hour 41 min

Dune Park: 1 hour 21 min

Portage/Ogden Dunes: 1 hr 16 min

Gary (Miller): 1 hour 9 min



AFTER

Michigan City:

Peak: 1 hr 15 min / Express: 67 min

Dune Park:

Peak: 61 min / Express: 52 min

Portage / Ogden Dunes:

Peak: 55 min / Express: 47 min

Gary (Miller):

Peak: 50 min / Express: 43 min

Future times are estimated based on current modeling estimates; may change based on final engineering

Bicycles



- High level platforms = ability to have bikes on trains at that station
- Double Track will add Miller (Gary), Portage/Ogden Dunes and 11th Street/Michigan City as new stations where bikes can be brought on board
- Dune Park is already a bikes on trains station
- New bike racks/ability to have future bike-share system at Miller (Gary), Portage/Ogden Dunes and 11th St/Michigan City. (This ability exists today at Dune Park and Beverly Shores.)

SCHEDULE

During the webinar, email
questions to:
doubletracknwi@nictd.com.



Latest Schedule

MAY 2020 SCHEDULE; SUBJECT TO CHANGE
AS PLANS PROGRESS

Activity Name	Planned Completion (May 2020 schedule)
60% DT Design Including Final Review Complete	06-11-20
90% DT Design Including Final Review Complete	10-12-20
Demolition Contract Awarded	11-30-20
100% DT Design Including Final Review Complete	01-06-21
Advertise IFB for DT Construction Bid Process	01-07-21
NICTD Requests Final Federal Grant Commitment	03-16-21
Complete Demolition	10-05-21
FTA Approves Final Federal Grant Commitment	07-08-21
Construction Notice to Proceed	07-09-21
All Segments Construction Substantial Complete	05-25-23
Revenue Service	09-29-23
Project Closeout Activity Complete	04-01-24

Procurement Information

- NICTD will hold Late summer/early fall open house for potential bidders/DBEs (may be virtual TBD)
 - To sign up for notifications, go to: www.mysouthshoreline.com/about/purchasing and create a login/password for the NICTD Plan Room
- NICTD's current DBE Participation Percentage is 12%. DBE information can be found at www.mysouthshoreline.com/about/purchasing at the very bottom of the page.

COST

\$420.3
MILLION*

*Subject to continuing review by Federal Transit Administration; excludes finance charges

REAL ESTATE & DEMOLITION



Property Acquisitions & Relocations

For Double Track Acquisition Maps, go to:

<https://www.doubletrack-nwi.com/property-impact/real-estate>

Real Estate Hotline: 800-382-5206

Federal policies require that any property acquisitions and/or relocations follow the *Uniform Relocation Assistance & Real Property Acquisition Policies Act of 1970 (Code of Federal Regulations, Title 49, Part 24)*

www.transit.dot.gov/funding/grant-programs/capital-investments/general-acquisition-and-relocation-information

During the webinar, email questions to:
doubletracknwi@nicted.com.

FEDERAL TRANSIT
ADMINISTRATION



GENERAL ACQUISITION & RELOCATION INFORMATION



FTA | U.S. DEPARTMENT OF
TRANSPORTATION 
FEDERAL TRANSIT ADMINISTRATION

SEE THE BACK PANEL OF THIS BROCHURE FOR
INFORMATION ON CONTACTING YOUR LOCAL AGENCY.

Demolition Schedule

Activity Name	Planned Start Date (May 2020 schedule)	Planned Completion
Michigan City: Maple to Washington	6-21-21	7-05-21
Michigan City : Tennessee St to County Line Rd	6-21-21	7-05-21
Ogden Dunes	2-03-21	2-18-21
Miller	6-21-21	7-05-21

Demolition

- BLN is NICTD's real estate contractor – they will oversee demolition contractor
- Upon NICTD possession of property, sites will be secured and boarded up within 48 hours
- No Trespassing Signs will be posted
- Asbestos, lead, other contamination will be addressed per regulations
- Utility disconnects managed by BLN
- Demolition estimated to occur 1.5 to 3 months post board-up
- BLN/demo contractor will formally notify municipalities and NICTD of closures, access changes during demolition

Early Tree Clearing

- All clearing will conform with natural resource/wildlife restriction windows per the Environmental Assessment/Finding of No Significant Impact
- Nov 2020-Mar 2021 expected (exact date TBD)
- Locations:
 - Miller new East Lot
 - Ogden Dunes South Parking Lot
 - Dune Park East Parking Lot Expansion Area

STATION AND PARKING IMPROVEMENTS

Of Note:

New station and parking lot lighting installed at Miller (Gary), Portage/Ogden Dunes, Dune Park and 11th St (Michigan City) will use Dark Skies guidance issued by the International Dark Sky Association to minimize light pollution for human and wildlife populations

MILLER STATION (GARY)

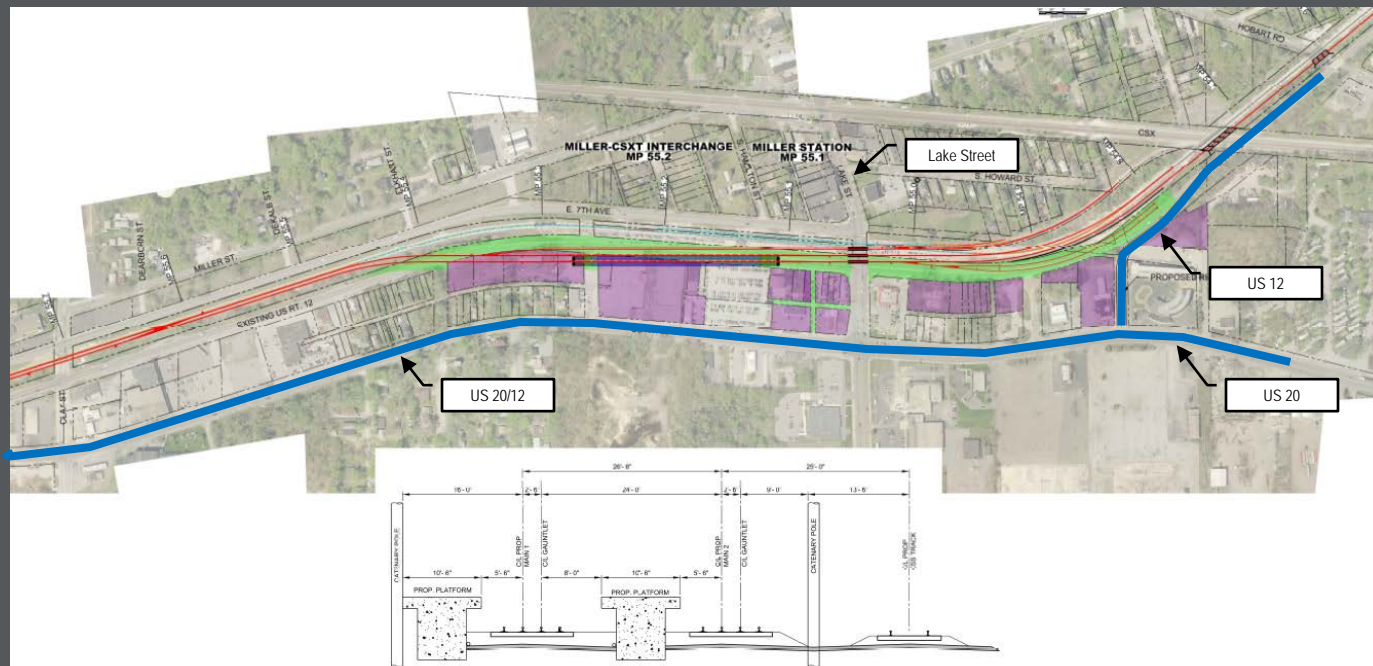
TRAVEL TIME TO MILLENNIUM STATION

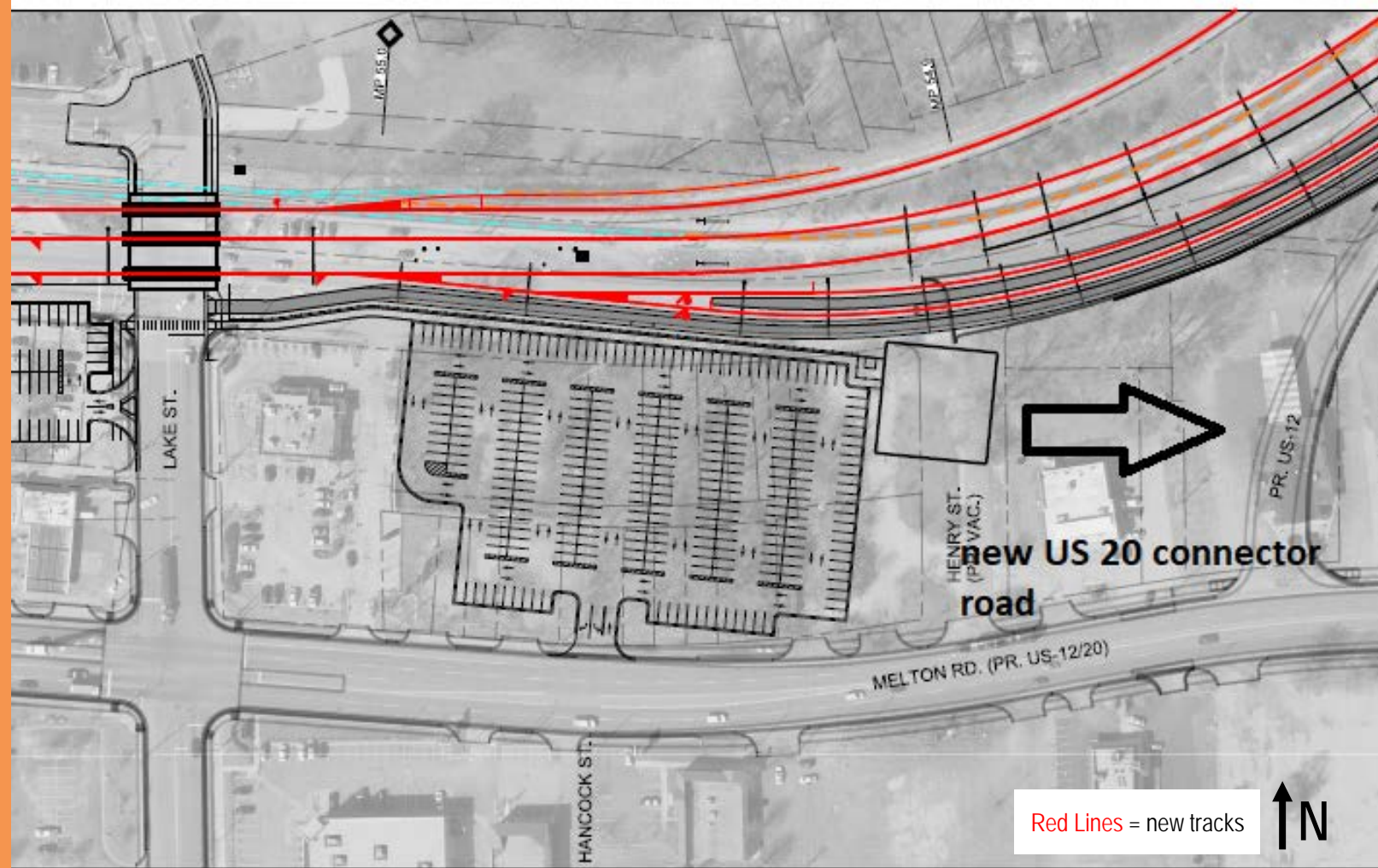
TODAY: 1 hour 9 min

AFTER DOUBLE TRACK: Peak: 50 min / Express: 43 min

Miller Station

- INDOT to re-align US 12 to connect with US 20 further east
- Re-align South Shore Line
- Station/platform/parking improvements



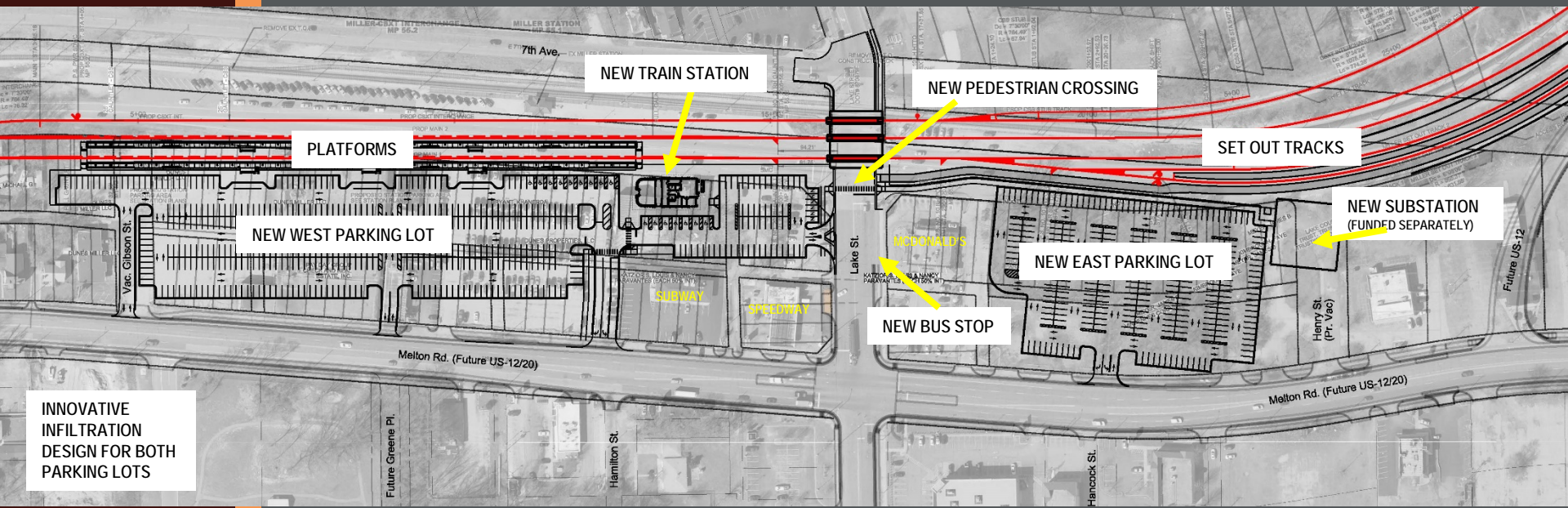


Red Lines = new tracks



During the webinar, email questions to:
doubletracknwi@nctd.com.

Miller Station (60% Design)



INNOVATIVE INFILTRATION DESIGN FOR BOTH PARKING LOTS

Miller (Gary) Parking - 777 TOTAL	
• West Lot	- 443 Standard Stalls + 16 ADA Accessible + 21 Kiss-n-Ride + 6 NICTD = 486 Total
• East Lot	- 291 Standard Stalls

Red Lines = new tracks

During the webinar, email questions to:
doubletracknwi@nictd.com.

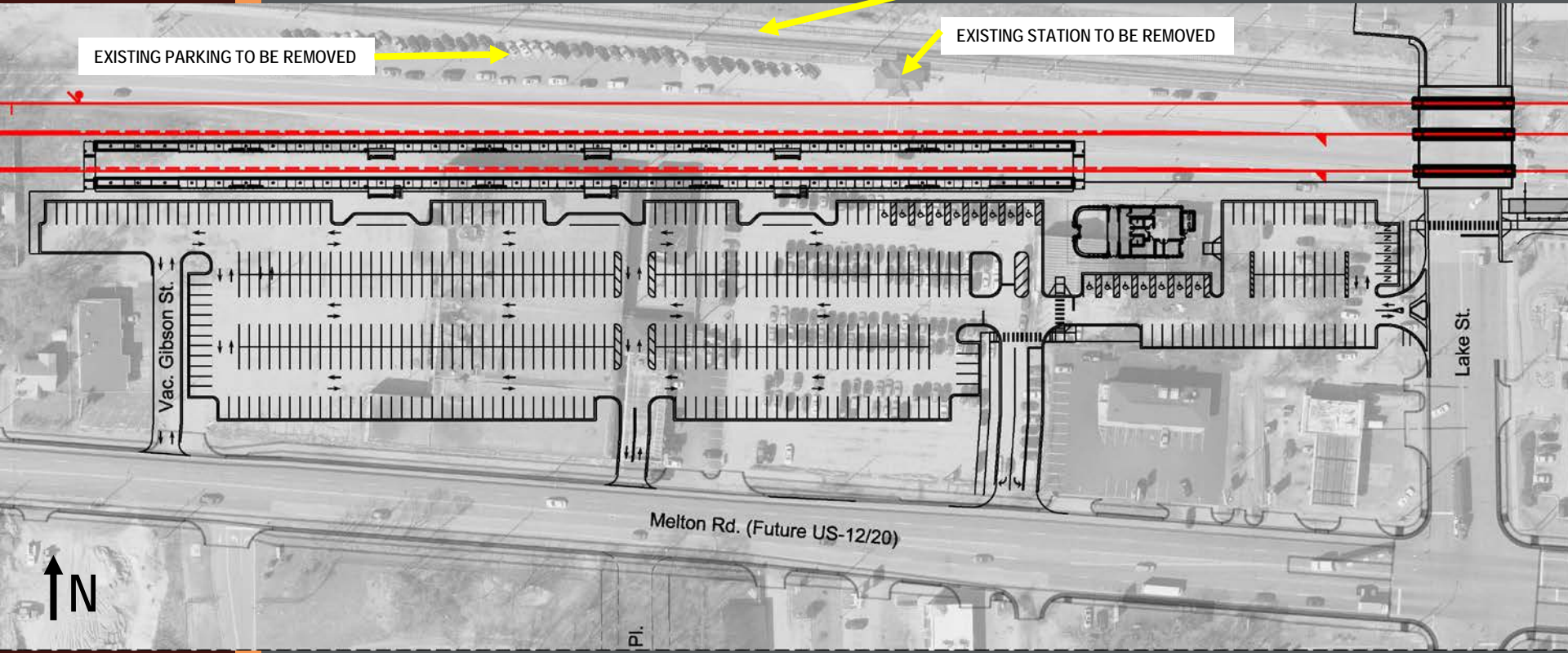


Miller Station (60% Design)

EXISTING TRACKS TO BE REMOVED

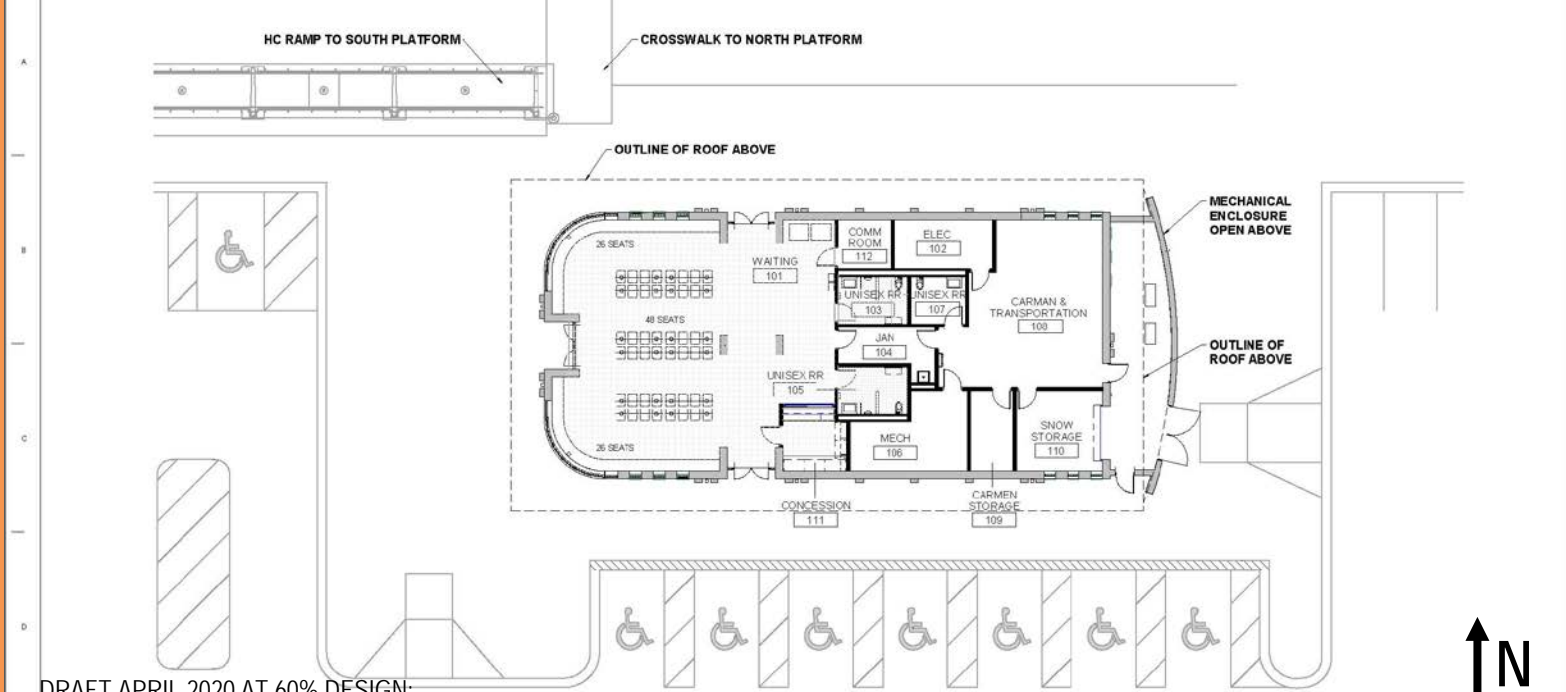
EXISTING PARKING TO BE REMOVED

EXISTING STATION TO BE REMOVED



Red Lines = new tracks

Miller Station – Floor Plan



DRAFT APRIL 2020 AT 60% DESIGN;
SUBJECT TO CHANGE AS DESIGN
PROGRESSES

6/20/2020 9:56:52 PM

AECOM
202 E. Wacker Drive, Suite 1400
Chicago, IL 60601
Tel: (312) 872-7700
www.aecom.com

NO.	DATE	DESCRIPTION
0	03/16/2020	60% DESIGN

NICOD
NORTHERN INDIANA COMMUTER
TRANSPORTATION DISTRICT
33 East Highway 12
Chesterford, Indiana 46304

DOUBLE TRACK N·W·I
Connectivity for Accelerated Growth
MICHIGAN CITY TO GARY, INDIANA

60% DESIGN - NOT FOR CONSTRUCTION

DESIGNED: MMB	DATE: 03/16/2020
DRAWN: BLS	
CHECKED: Cheater	

NCTD - SOUTH SHORE LINE MP 10.2 TO 68.8
DOUBLE TRACK - NBT

MILLER STATION PARKING

PLANNED	SHEET
SCALE	AS NOTED

Miller Station (60% Design)

VIEW: View from Lake Street looking west/northwest
DRAFT APRIL 2020 AT 60% DESIGN;
NOT FINAL DESIGN



VIEW: Looking Northeast at southwest corner of station
DRAFT APRIL 2020 AT 60% DESIGN;
NOT FINAL DESIGN



Miller Station (60% Design)

VIEW: Looking westward just to the north of station
DRAFT APRIL 2020 AT 60% DESIGN;
NOT FINAL DESIGN



Miller (Gary) – Phase 1

(DETAILED SCHEDULE IS IN DEVELOPMENT)

- Major Work Elements Anticipated:
 - INDOT to reconstruct, re-align US 12
 - Relocate 54" Storm Sewer West of Lake St.
 - Construct East Parking Lot

- Anticipated Impacts:
 - Existing US 12 closed at project site
 - Limited closure on 7th Street west of Lake St. (1 - 2 weeks expected)

Miller (Gary) – Phase 2

(DETAILED SCHEDULE IS IN DEVELOPMENT)

- Major Work Elements Anticipated:
 - Construct portion of new west parking lot
 - Begin station and platform construction
 - Begin track construction east & west of Lake Street
 - Open east parking lot

- Anticipated Impacts:
 - Weekend station closures
 - Close existing parking lot

Miller (Gary) – Phase 3

(DETAILED SCHEDULE IS IN DEVELOPMENT)

- Major Work Elements Anticipated:
 - Complete parking lot west of Lake Street
 - Install grade crossings for new tracks across Lake Street
 - Complete new south track and platform

- Anticipated Impacts:
 - Lake Street Full Closure (14 -21 days expected; detours available)

Miller (Gary) – Phase 4

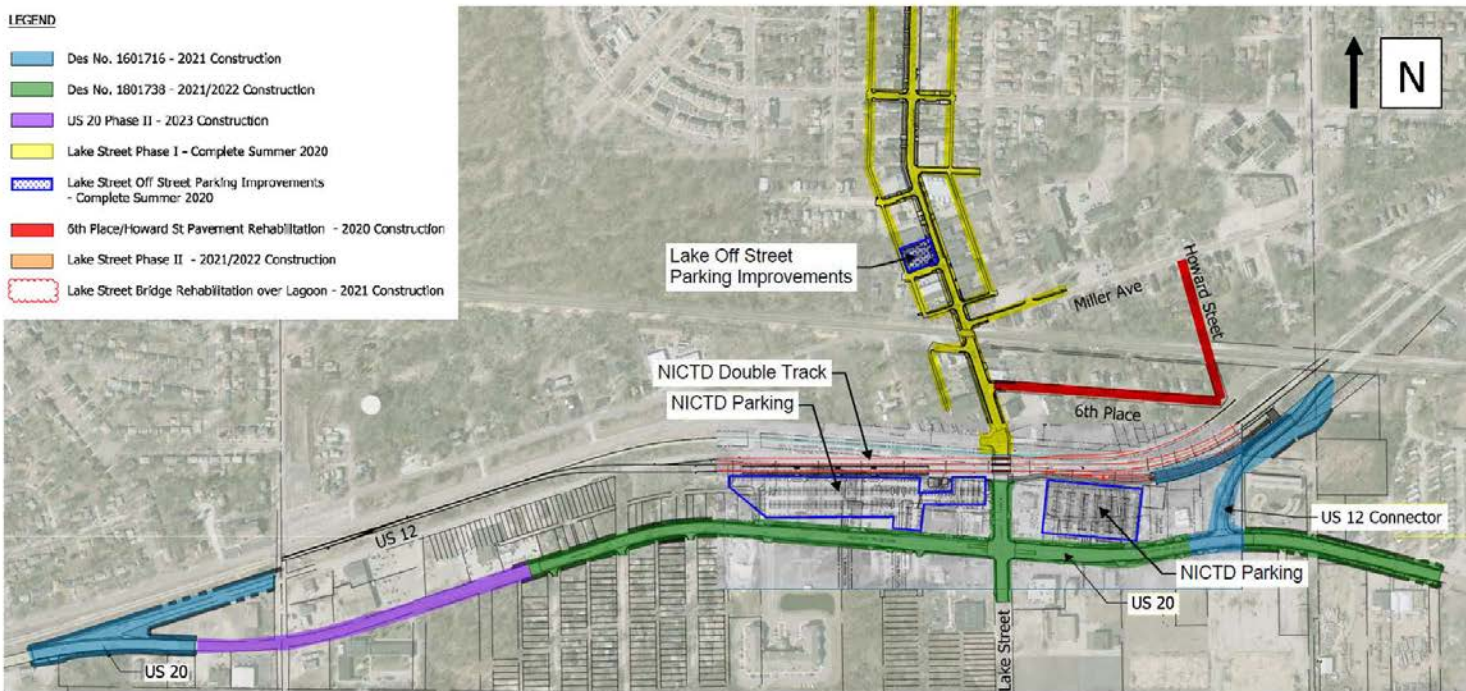
(DETAILED SCHEDULE IS IN DEVELOPMENT)

- Major Work Elements Anticipated:
 - Open new south track, high-level platform (close existing station)
 - Construct new north track and platform
 - Complete new station & west parking lot
 - Construct new freight track and crossing at Lake Street
 - Remove existing tracks
- Anticipated Impacts:
 - Intermittent lane closures
 - Lake Street Full Closure (14 – 21 days expected; detours available)
 - Parking area north of Lake Street closed

Nearby Projects – INDOT, City of Gary

LEGEND

- Des No. 1601716 - 2021 Construction
- Des No. 1801738 - 2021/2022 Construction
- US 20 Phase II - 2023 Construction
- Lake Street Phase I - Complete Summer 2020
- Lake Street Off Street Parking Improvements - Complete Summer 2020
- 6th Place/Howard St Pavement Rehabilitation - 2020 Construction
- Lake Street Phase II - 2021/2022 Construction
- Lake Street Bridge Rehabilitation over Lagoon - 2021 Construction



Various Upcoming Projects at Lake/12/20 in Gary

INDOT Detour Plan for their US 20 Connector Road Project

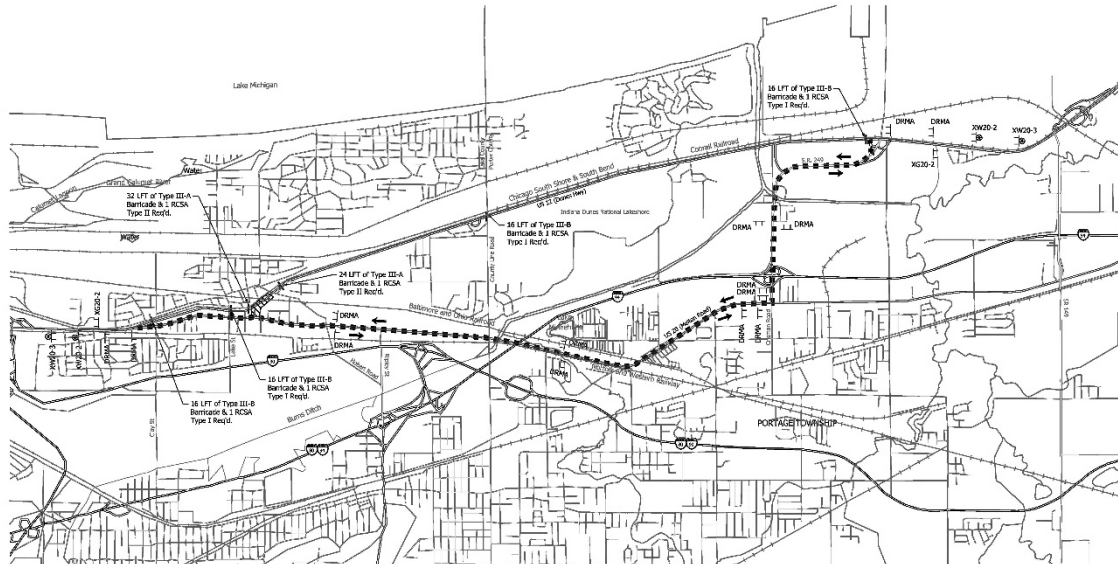
Maintenance of Traffic

Closure of US 12 at the current US 20 intersection, west of Clay Street

- Traffic will be detoured along US 20 and SR 249
- Access to local residences and businesses will be maintained utilizing Clay Street

Partial closures along US 20 and Lake Street

- A minimum of one lane will be maintained in each direction during construction



QUESTIONS?

During the webinar, email questions to:

doubletracknwi@nictd.com

PORTAGE/OGDEN DUNES, DUNE PARK AND BEVERLY SHORES STATIONS

TRAVEL TIME TO MILLENNIUM STATION

PORTAGE/OGDEN DUNES

TODAY: 1 hour 16 min

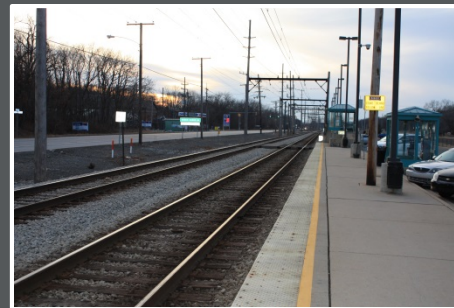
AFTER DOUBLE TRACK: Peak: 55 min / Express: 47 min

DUNE PARK

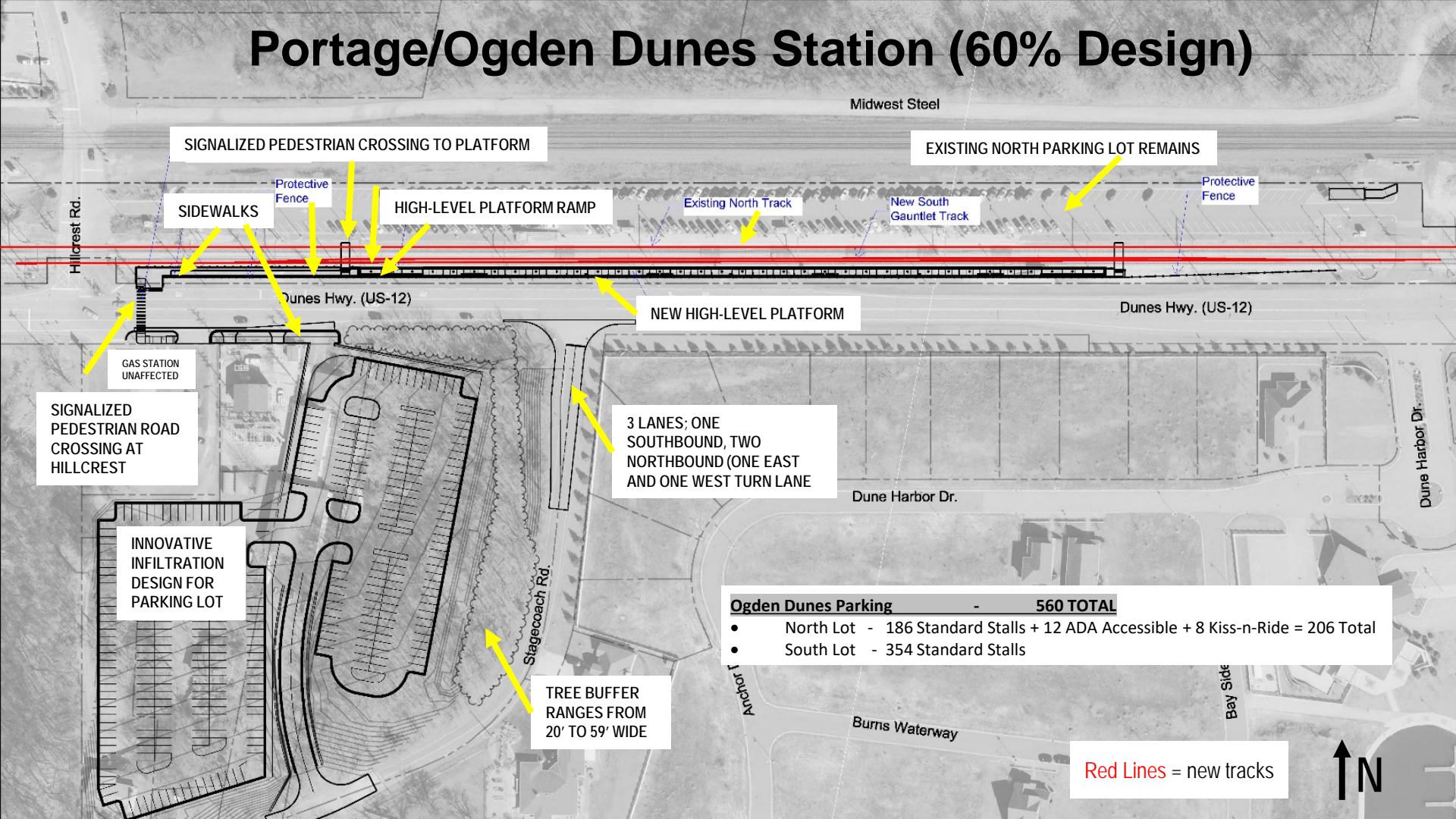
TODAY: 1 hour 21 min

AFTER DOUBLE TRACK: Peak: 61 min / Express: 52 min

- Portage/Ogden Dunes
 - New high-level south platform
 - Additional parking
- Dune Park
 - Re-align Calumet Trail under SR 49 bridge
 - Additional parking
- Beverly Shores
 - Two low-level platforms



Portage/Ogden Dunes Station (60% Design)



SIGNALIZED PEDESTRIAN CROSSING TO PLATFORM

EXISTING NORTH PARKING LOT REMAINS

SIDEWALKS

HIGH-LEVEL PLATFORM RAMP

NEW HIGH-LEVEL PLATFORM

3 LANES; ONE SOUTHBOUND, TWO NORTHBOUND (ONE EAST AND ONE WEST TURN LANE)

INNOVATIVE INFILTRATION DESIGN FOR PARKING LOT

TREE BUFFER RANGES FROM 20' TO 59' WIDE

SIGNALIZED PEDESTRIAN ROAD CROSSING AT HILLCREST

GAS STATION UNAFFECTED

Ogden Dunes Parking - 560 TOTAL

- North Lot - 186 Standard Stalls + 12 ADA Accessible + 8 Kiss-n-Ride = 206 Total
- South Lot - 354 Standard Stalls

Red Lines = new tracks



Portage/Ogden Dunes – Phase 1

(DETAILED SCHEDULE IS IN DEVELOPMENT)

- Major Work Elements:
 - Construct new south track
 - Re-construct new grade crossings at Hillcrest Rd. & Continental Can (Continental Can is the egress road at the east end of existing north lot)
 - Begin construction of new south parking lot

- Anticipated Impacts:
 - Lane Closures on US 12, Stagecoach Road
 - Close Hillcrest & Continental Can Road (7–14 days)

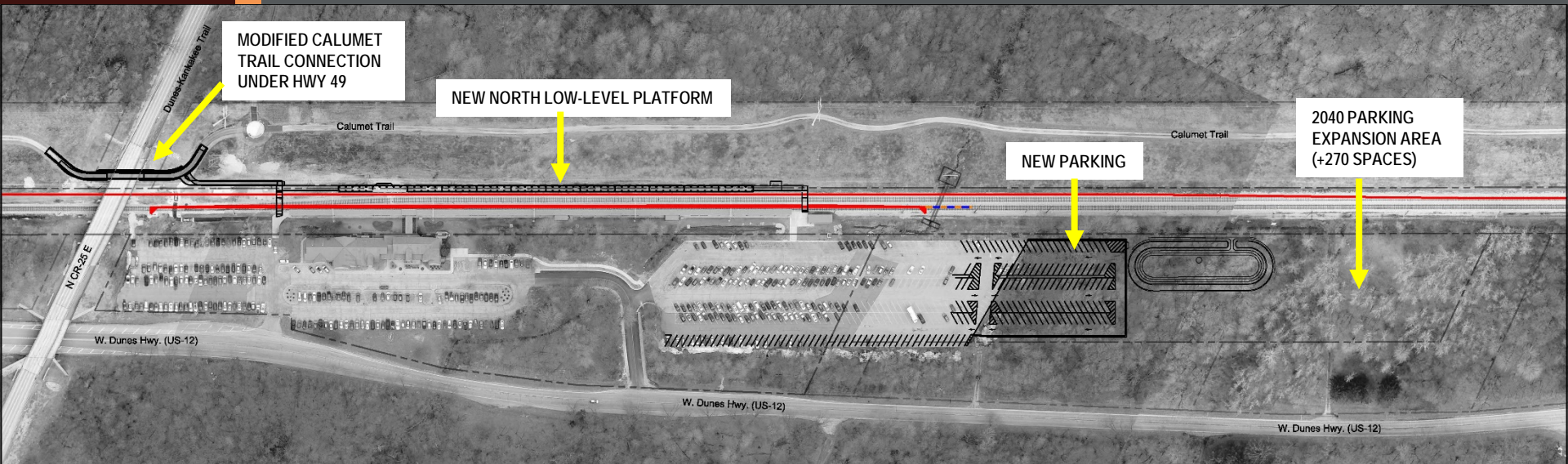
Portage/Ogden Dunes – Phase 2

(DETAILED SCHEDULE IS IN DEVELOPMENT)

- Major Work Elements:
 - Construct new south high-level platform
 - Construct pedestrian crossing at US 12 / Hillcrest Road
 - Add east turn lane on northbound Stagecoach Road at US 12
 - Complete south parking lot
 - Re-open north parking lot

- Anticipated Impacts:
 - Lane closures on Stagecoach Road

Dune Park Station (60% Design)




Dune Park - 615 TOTAL

- West Lot - 210 Spaces
- East Lot - 405 Spaces

During the webinar, email questions to:
doubletracknwi@nctd.com.

DRAFT APRIL 2020 AT 60% DESIGN;
SUBJECT TO CHANGE AS DESIGN
PROGRESSES

Red Lines = new tracks 

Dune Park

(DETAILED SCHEDULE IS IN DEVELOPMENT)

- Major Work Elements:
 - Construct additional parking on east side of existing lot
 - Construct gauntlet track on existing south track and modify catenary system
 - Construct new north low-level platform
 - Relocate Calumet Trail west of station

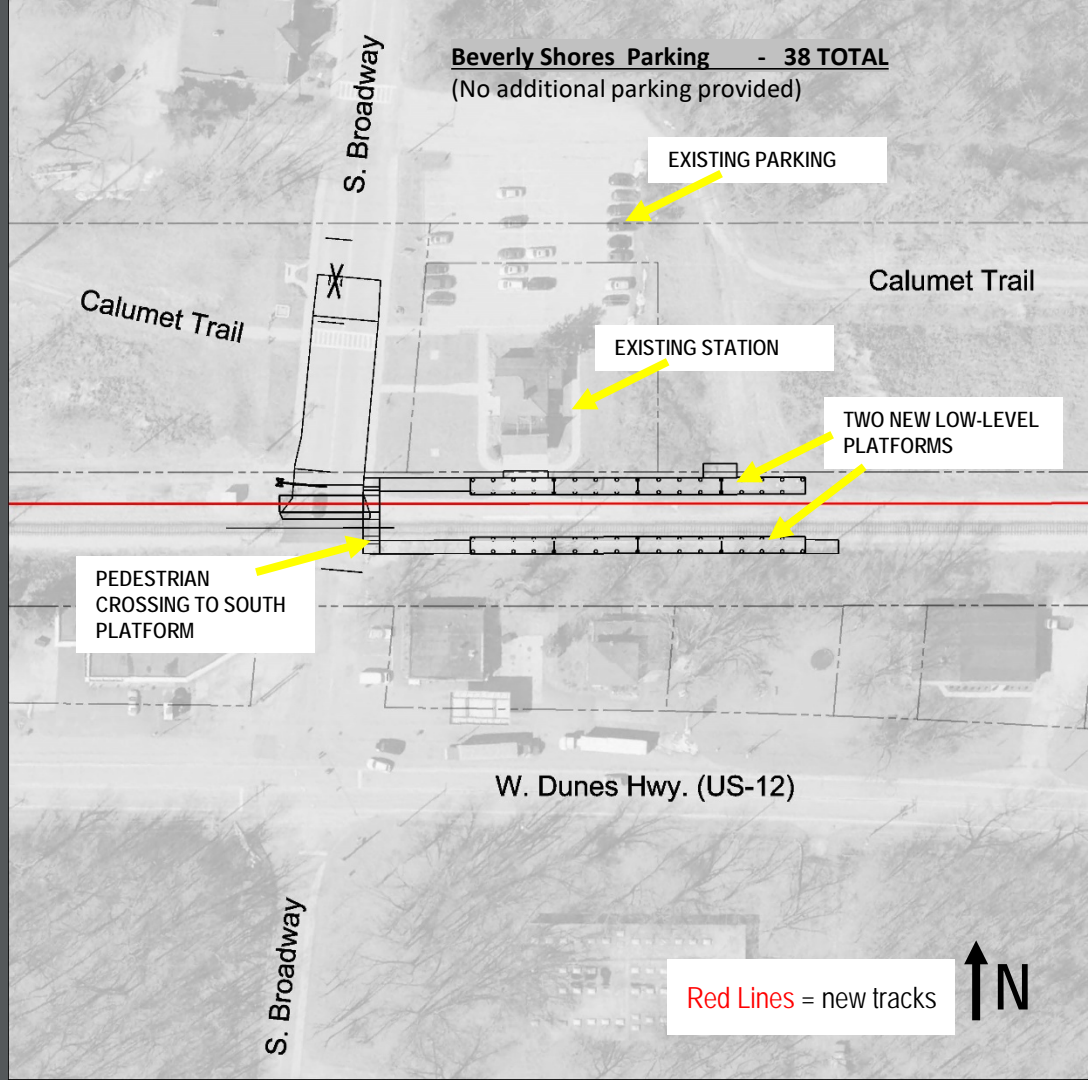
- Anticipated Impacts:
 - Limited weekend bus shuttles during track closures

Beverly Shores Station (60% Design)

OF NOTE:

- NO CHANGE TO HISTORIC STATION BUILDING

DRAFT APRIL 2020 AT 60% DESIGN;
SUBJECT TO CHANGE AS DESIGN
PROGRESSES



Beverly Shores Parking - 38 TOTAL
(No additional parking provided)

EXISTING PARKING

EXISTING STATION

TWO NEW LOW-LEVEL PLATFORMS

PEDESTRIAN CROSSING TO SOUTH PLATFORM

W. Dunes Hwy. (US-12)

Red Lines = new tracks



Beverly Shores

(DETAILED SCHEDULE IS IN DEVELOPMENT)

- Major Work Elements:
 - Phase1- Construct new south low-level platform and pedestrian crossing
 - Phase 2- Construct new north track and low-level platform

- Anticipated Impacts:
 - No major impacts anticipated. Station house and parking lot expected to remain in service.
 - Limited weekend bus shuttles during track closures

11TH STREET STATION (MICHIGAN CITY)

TRAVEL TIME TO MILLENNIUM STATION

TODAY: 1 hour 41 min

AFTER DOUBLE TRACK: Peak: 1 hr 15 min / Express: 67 min



Michigan City – 10th Street Improvements

- Follows Preferred Alternative route from 2013 Study
- Remove existing tracks
- Construct two new tracks south of 10th St., Sheridan Ave. to Chicago St.
- Two-way traffic on 10th Street
- Closes three streets along 10th. St (Carlton, Donnelly, Claire)

Michigan City – 11th Street Improvements

- Remove existing tracks
- Construct two new tracks on the north side of 11th St., Chicago St. to Michigan Blvd.
- New station between Franklin St. and Cedar St.
- One-way traffic on 11th St.
- Closes ten streets along 11th St
(Kentucky, Tennessee, Elston, Manhattan, Buffalo, Pine, Spring, Cedar, York, and Maple)



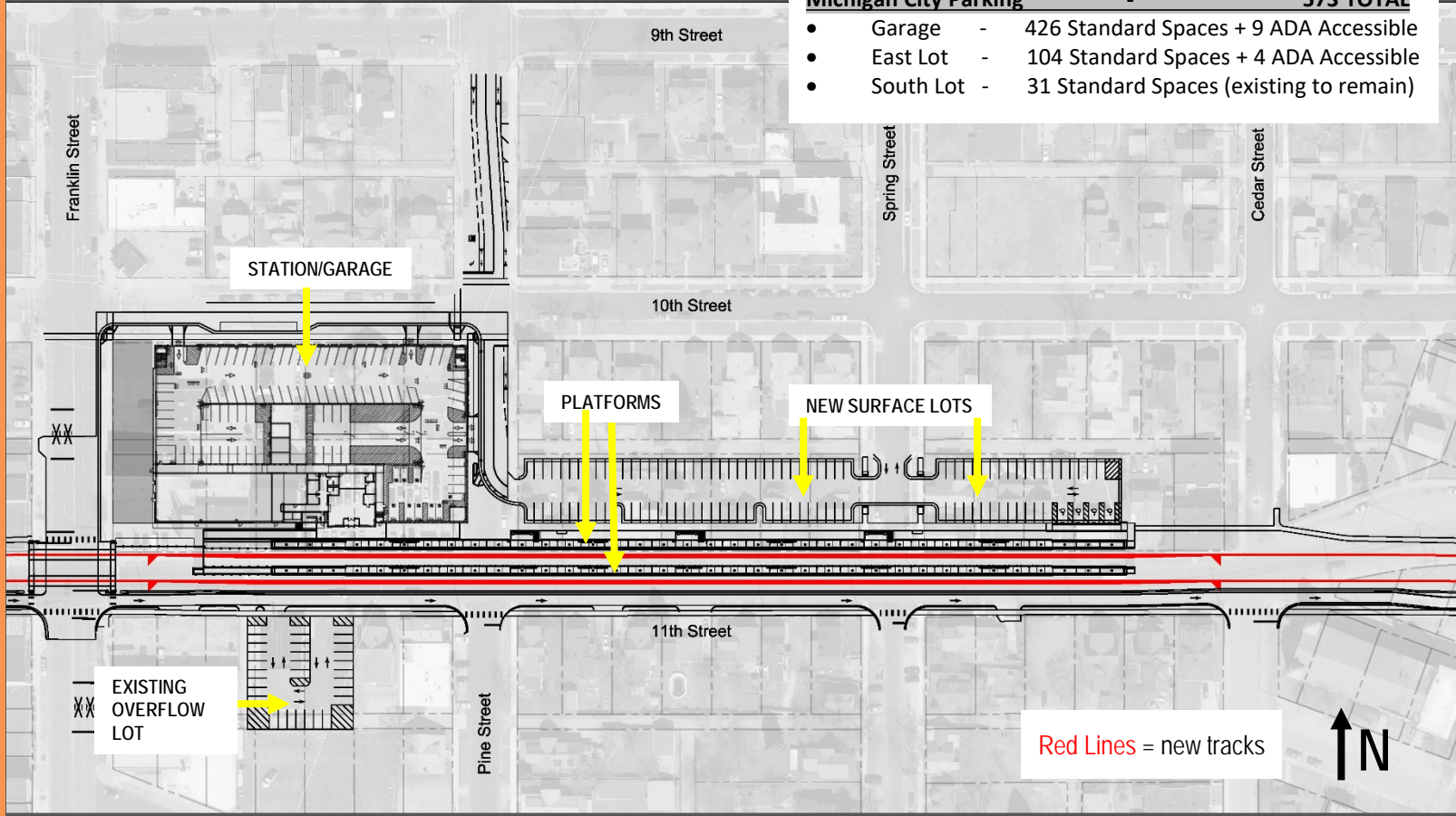
1 TYPICAL CUL-DE-SAC STREET
MICHIGAN CITY - MANHATTAN ST.
9 SEPTEMBER 2016

Renderings are conceptual only. All details are subject to change as the project is further developed.

Michigan City – 11th St. Station (60% Design)

Michigan City Parking - **573 TOTAL**

- Garage - 426 Standard Spaces + 9 ADA Accessible
- East Lot - 104 Standard Spaces + 4 ADA Accessible
- South Lot - 31 Standard Spaces (existing to remain)



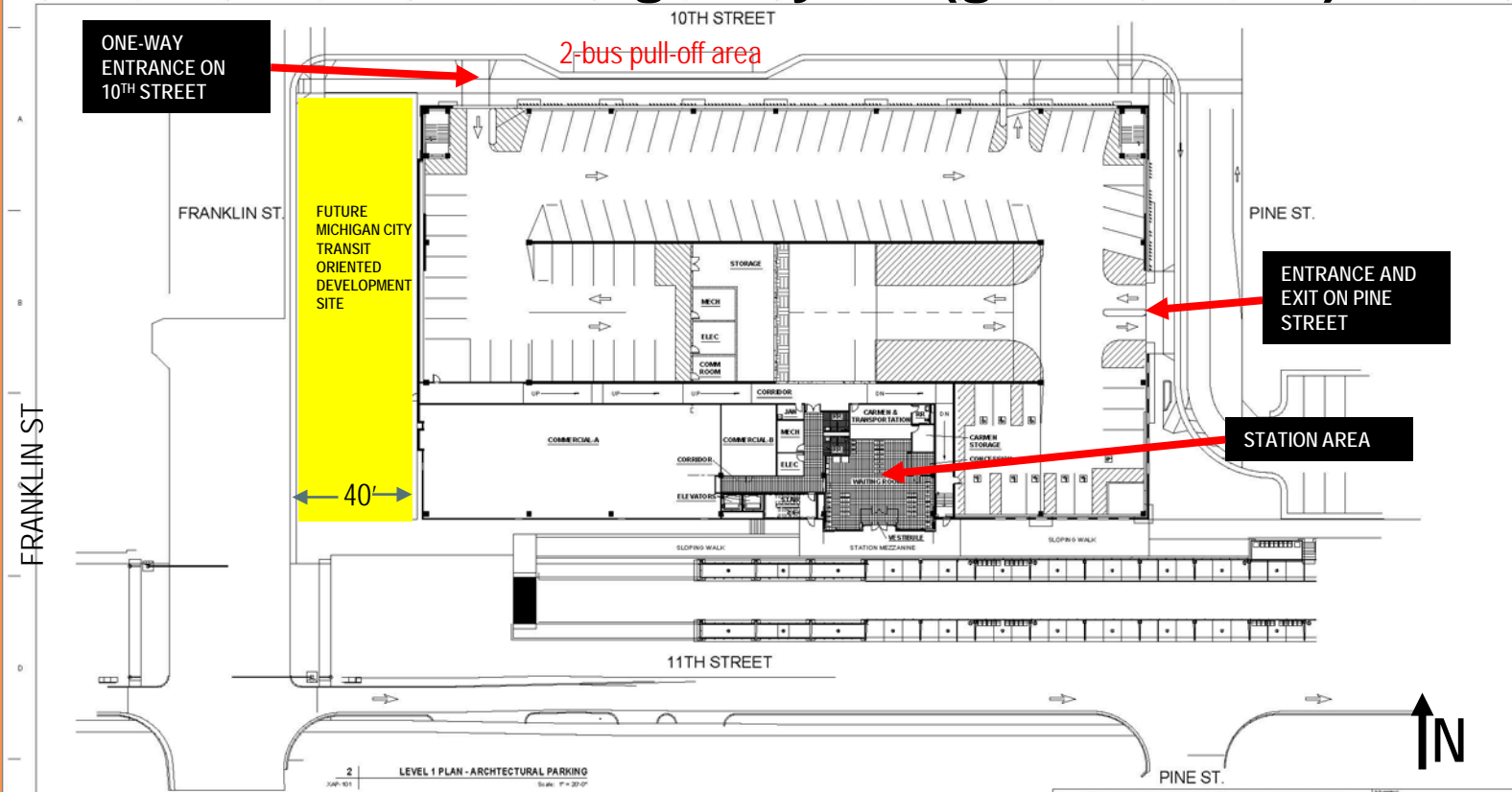
Red Lines = new tracks

11th St. Station Garage Layout (ground level)

DRIFT APRIL 2020 AT 60% DESIGN
SUBJECT TO CHANGE AS DESIGN
PROGRESSES

- GARAGE IS 3 LEVELS (ROOF IS THIRD LEVEL)
- EXPANDABLE TO TWO ADDITIONAL LEVELS IN THE FUTURE

*Of Note:
Neighborhood
Capital Institute
and SCB
conducted TOD
Developer
Interest Study
2019*



6/4/2020 15:32:28 PM

AECOM
202 E. Wacker Drive, Suite 1400
Chicago, IL 60601
Tel: (312) 373-7700
www.aecom.com

11th STREET

2 LEVEL 1 PLAN - ARCHITECTURAL PARKING
DATE: 7/24/19

ISSUE	DATE	DESCRIPTION
0	03/16/2020	60% SUBMITTAL DOCUMENTS

NICD
NORTHERN INDIANA COMMUTER
TRANSPORTATION DISTRICT
33 East Highway 12
Chesterton, Indiana 46304

MICHIGAN CITY TO GARY, INDIANA

60% DESIGN - NOT FOR CONSTRUCTION

DESIGNED BY: MIB
DRAWN BY: ELS
CHECKED BY: JRP
DATE: 03/16/2020

NICTD - SOUTH SHORE LINE MP 32.2 TO 58.8
DOUBLE TRACK - HWY

LEVEL 1 PLAN - PARKING GARAGE

FILE NAME: _____ SHEET: _____
FOUR: _____ AS NOTED: _____

During the webinar, email questions to:
doubletracknwi@nictd.com.

Michigan City 11th Street Station Considerations



During the webinar, email questions to:
doubletracknwi@nictd.com.



View: Looking northeast from Franklin and 11th Street
DRAFT APRIL 2020 AT 60% DESIGN;
NOT FINAL DESIGN

VIEW: Looking Northwest just east of Pine at 11th Street
DRAFT APRIL 2020 AT 60% DESIGN;
NOT FINAL DESIGN



View: From above looking northwest south of 11th near Spring Street
DRAFT APRIL 2020 AT 60% DESIGN;
NOT FINAL DESIGN



Michigan City 11th Street – Phase 1

(DETAILED SCHEDULE IS IN DEVELOPMENT)

- Major Work Elements:
 - Perform property remediation & demolition
 - Remove existing historic station facade
 - Construct new 11th Street (one way eastbound)
 - Construct Green Street and intersection at Chicago Street
 - Realign track at Cedar Street
 - Begin construction of new 11th St. Station & parking garage
- Anticipated Impacts:
 - Close existing 11th Street Station
 - Rolling extended closure on segments of 11th Street
 - Intermittent intersection closures along 11th Street
 - Limited weekend bus shuttles during track closures

Michigan City 11th Street – Phase 2

(DETAILED SCHEDULE IS IN DEVELOPMENT)

- Major Work Elements:
 - Construct cul-de-sacs north of 11th street at Kentucky, Tennessee, Elston, Manhattan, Buffalo, Pine, Spring, Cedar, York and Maple Streets
 - Construct new track on north side of existing in-service track
 - Construct track grade crossings across north-south streets
 - Construct north high-level platform
 - Open new track & close existing track

- Anticipated Impacts:
 - Close existing westbound 11th St.
 - Intermittent intersection closures along 11th Street at grade crossings
 - Permanent closures at cul-de-sacs

Michigan City 11th Street – Phase 3

(DETAILED SCHEDULE IS IN DEVELOPMENT)

- Major Work Elements:
 - Remove existing track
 - Construct center boarding high-level platform
 - Construct & open new south track
 - Complete new 11 St. Station, parking garage & surface lots

- Anticipated Impacts:
 - Intermittent intersection closures along 11th Street at grade crossings
 - Phased closures on segments of 11th Street

Michigan City 10th Street

(DETAILED SCHEDULE IS IN DEVELOPMENT)

- Major Work Elements:
 - Perform property remediation & demolition on south side of 10th Street
 - Construct new tracks on south side of 10th Street
 - Construct & open new south track
 - Construct new grade crossings at Willard & Sheridan Avenues
 - Construct cul-de-sac south of 10th Street at Claire Street
 - Close Donnelly Street on south side of 10th Street
 - Remove existing track & replace with pavement along 10th Street
- Anticipated Impacts:
 - Intermittent intersection closures along 10th Street at grade crossings
 - Phased closures on 10th Street
 - Permanent closures at Claire and Donnelly Streets

Quiet Zone

- Michigan City will apply for a Quiet Zone with the Federal Railroad Administration
- Local municipality must be applicant but NICTD helping Michigan City with process
- Once Quiet Zone approved, NICTD trains will not blow horn through Quiet Zone unless engineer has safety concern requiring its use



MAINTENANCE OF TRAFFIC PLAN

Maintenance of Traffic (MOT)

- Our Goal: To do all we can to minimize disruption to communities and maintain continuity of our passenger service.
- Priority: Police & Fire access during and after construction.
- Priority: Access to businesses during construction, as well as pedestrian/ADA access.
- More detail will be provided in fall of 2020.
- Information will be posted to website.



FIRE & LIFE SAFETY

During the webinar, email
questions to:
doubletracknwi@nictd.com.

Fire Life Safety and Security Committee (FLSSC)

- Safety is NICTD's highest priority.
- Federal Transit Administration requires formation of a Fire Life Safety and Security Committee be formed for the project.
- Police and Fire Departments from Gary to Michigan City have been invited.
- Will meet virtually this summer, fall, then more frequently as we approach and begin construction.



TRANSIT DEVELOPMENT DISTRICTS

During the webinar, email
questions to:
doubletracknwi@nictd.com.

Transit Development Districts

- The West Lake and Double Track projects are projected to attract more than \$2 billion in private investment to Northwest Indiana over the next 20 years.
- To maximize this return on the investment in commuter rail expansion, the Northwest Indiana Regional Development Authority has been directed to create Transit Development Districts (TDDs) around each station area.
- While local cities and town retain control over the type and amount of development around a station, the TDDs will enable the RDA to provide additional funding for development incentives and infrastructure improvements.

Community Meetings

- Over the past year, the RDA Transit Development District team has begun drawing up study areas outlining potential TDDs based on information and feedback provided by each community with a station along West Lake and the existing line.
- It is RDA's intention to begin holding the series of public meetings required before formally establishing the TDDs this summer. Several options, including virtual and outdoor meetings, are being considered to maximize public safety.
- For more information, check out www.in.gov/rda, [facebook/RDACatalyst](https://www.facebook.com/RDACatalyst) and Twitter @nwi_rda.

QUESTIONS & ANSWERS

During the webinar, email
questions to:
doubletracknwi@nictd.com.

QUESTIONS & ANSWERS

- QUESTIONS SUBMITTED IN ADVANCE

- How does the project address Americans with Disabilities Act Requirements?
- How many new trains a day will there be in each direction on weekdays and weekends?
- How will time be saved for trains heading west from Gary?
- Will every train stop at every station?
- Will this webinar be recorded and Powerpoint be made available?
 - Yes, it will be at: www.doubletrack-nwi.com/next-steps/public-open-houses
- How will the Dune Acres/Mineral Springs crossing be managed, since it's the only way in/out of town?
- Will busing be required during construction?

QUESTIONS & ANSWERS

- QUESTIONS SUBMITTED IN ADVANCE
 - How many people will be hired by NICTD as part of the Double Track project?
 - How many construction jobs is the project expected to create?
 - Will the area that the Miller Garden Club uses for the Farmer's Market be impacted?
 - Why aren't high-level platforms being installed at Beverly Shores?
 - Will the project result in removing the access road Ogden Dunes residents use to the north of the tracks when freight trains are blocking the intersection?



- Website: <http://www.doubletrack-nwi.com/>
- Email questions anytime to: doubletracknwi@nctd.com
- Real Estate Hotline: 800-382-5206
- Facebook: Double Track Northwest Indiana
- Mail: South Shore Line
Attn: Double Track NWI
33 East U.S. Highway 12
Chesterton, IN 46304



Tonight's webinar recording and pdf of presentation will be posted to:

www.doubletrack-nwi.com/next-steps/public-open-houses

(Please note it may take several days to post.)

Station Renderings and Station/Parking Layouts now available at:

www.doubletrack-nwi.com/docs/renderings-graphics

During the webinar, email questions to:
doubletracknwi@nctd.com.